

Better Safe than Sorry

A Peek into the Future with IGA



Katarina Bolemant
Development Team Leader

About Me



**“IdM is not a project, it is a journey...
and most of the time it is about surviving the journey.”**



IGA Journey

- > Usually painful
- > Tends to last forever
- > Lacking confidence
 - > Not knowing what will happen
- > Feeling of losing control
 - > Must let go of power



Know Your Environment



- > What kind of workflows exist?
- > What rules do you use for login names?
- > Are there any exceptions to processes/rules?
- > What are the responsibilities?

Know Your Environment



> What if something bad happens?

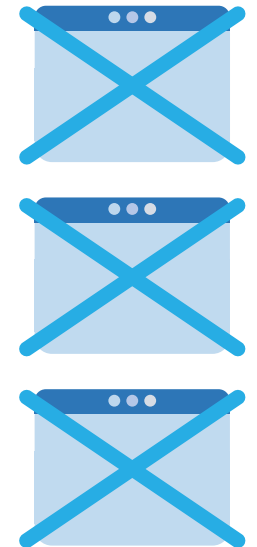
Simulations



- > No more stress
- > No more frustration
- > Predict the future
- > Shape the future

Simulations in Action

- > What if I run a synchronization in an IGA platform?
 - > You will revoke access for the CEO in three applications
- > What can I do about it?
 - > Report it to a customer
 - > Tell the IGA platform not to touch the CEO's identity this time



Simulations in Action

Simulation result: Import from LDAP - development simulation, 2023-04-20T10:39:54.054Z

Simulation task details

Start timestamp	April 20, 2023 at 10:39:54 AM UTC
End timestamp	April 20, 2023 at 10:40:01 AM UTC
Finished in	7 seconds
Task	Import from LDAP - development simulation
Status	Finished
Configuration	Development
Added objects	0
Deleted objects	5
Modified objects	78
Unmodified objects	39
All processed objects	122
Errors	0

Event marks

Focus activated	0	Focus deactivated	0	Focus renamed	0	Focus assignments changed	0
Focus archetype changed	0	Focus parent organization refere...	0	Focus role membership changed	0	Projection activated	0
Projection deactivated	5	Projection renamed	0	Projection identifier changed	0	Projection entitlement changed	0
Projection password changed	0	Resource object affected	5				

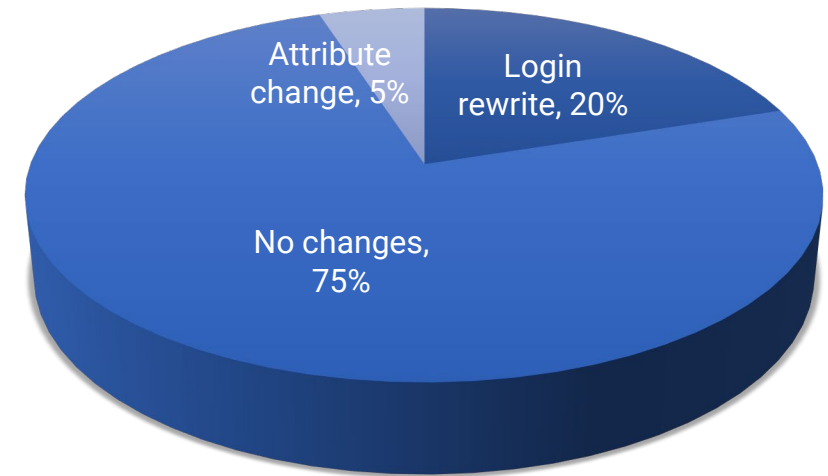
Processed objects

Name	Type	State	Changes
uid=alopez,ou=people,dc=example,dc=com (Account uid=alopez,ou=people,dc=example,dc=com (default) on LDAP) Projection deactivated, Resource object affected	Shadow	Deleted	No changes
uid=hacker,ou=people,dc=example,dc=com (Account uid=hacker,ou=people,dc=example,dc=com (default) on LDAP) Projection deactivated, Resource object affected	Shadow	Deleted	No changes
uid=mail-service,ou=people,dc=example,dc=com (Account uid=mail-service,ou=people,dc=example,dc=com (default) on LDAP) Projection deactivated, Resource object affected	Shadow	Deleted	No changes
uid=spamassassin-service,ou=people,dc=example,dc=com (Account uid=spamassassin-service,ou=people,dc=example,dc=com (default) on LDAP) Projection deactivated, Resource object affected	Shadow	Deleted	No changes
uid=test123,ou=people,dc=example,dc=com (Account uid=test123,ou=people,dc=example,dc=com (default) on LDAP) Projection deactivated, Resource object affected	Shadow	Deleted	No changes

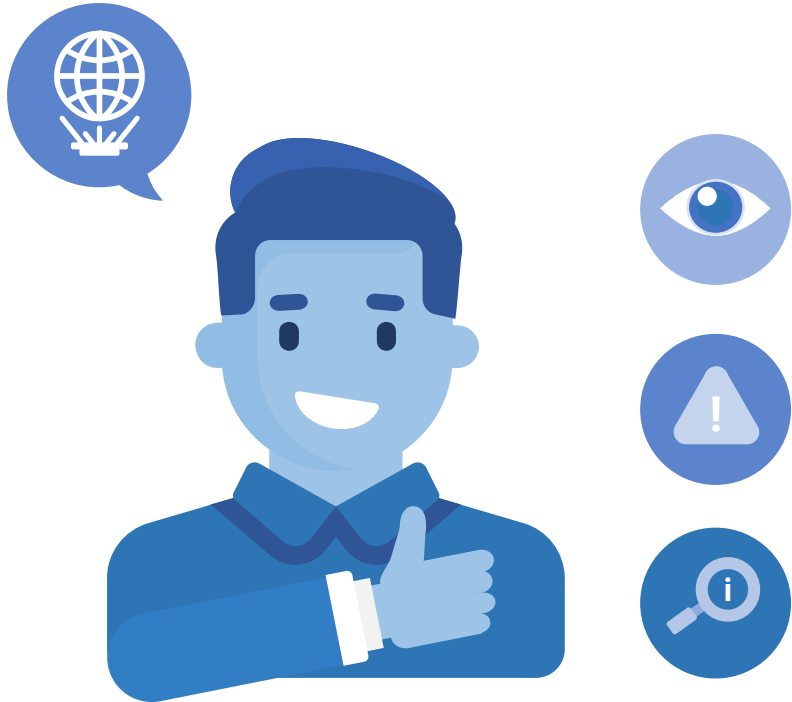
- > What if I run a synchronization in an IGA platform?
- > You will deactivate 5 accounts
- > What can I do about it?
- > See which accounts will be deactivated
- > Make a decision - 2 OK, they are leaving
- > 3 accounts must not be deactivated - tell the IGA platform to skip deactivation

Simulations in Action

- > What if I run a synchronization in an IGA platform?
 - > 20% of the users won't be able to log in anymore
- > What can I do about it?
 - > Check the rule with a customer
 - > Report users that will be affected
 - > Tell the IGA platform which changes to ignore and which to apply



Benefits of Simulations



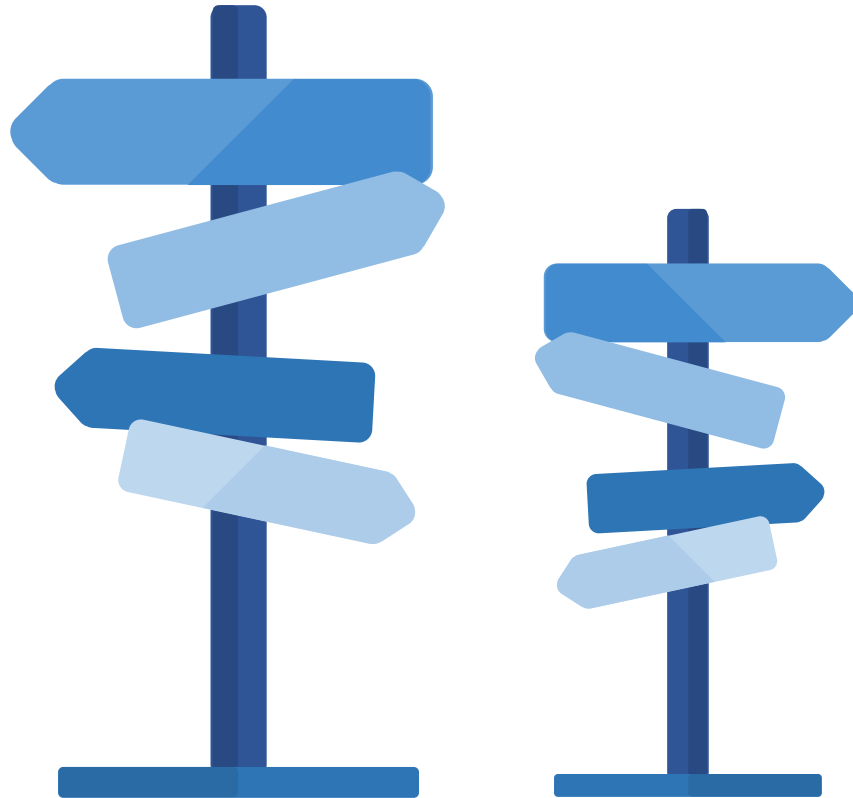
- > See and predict the future
- > Avoid unnecessary risks of data corruption
- > Comprehensive analysis and reports about data
- > Eliminate problems before full synchronization
- > **Better safe than sorry**

Simulations and Stakeholders

- > Build relationships from the beginning
- > Increase confidence in the IGA platform
- > Easier to let go of power



Simulations Conclusion



- > A peek into the future with the IGA platform
- > Why it is important:
 - > Verify your configuration
 - > See and eliminate shortcomings in your data and processes
 - > Improve the communication between the integrator and customer
 - > Build stronger and more trustworthy relationships

Thank you for your time

Is there something you would like to ask? Katarina will be happy to answer your questions now.

Follow us on social media and join us at GitHub or Gitter!
Get in touch with us at info@evolveum.com



Evolveum